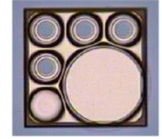




940nm 20mW VCSEL Chip

VCC-94A20H



Features

- 940nm multi-emitter VCSEL chip
- Typical 20mW at 30mA
- Multimode beam profile

Applications

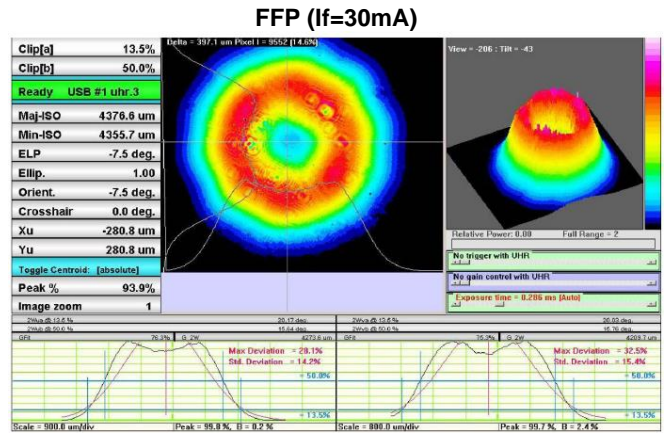
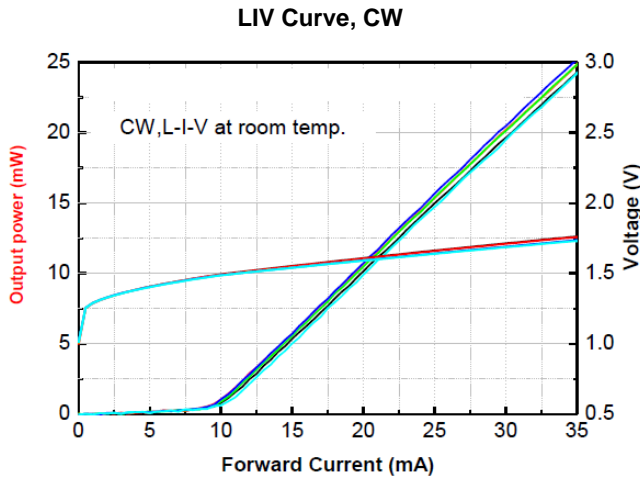
- Consumer electronics
- Safety sensor

Specifications

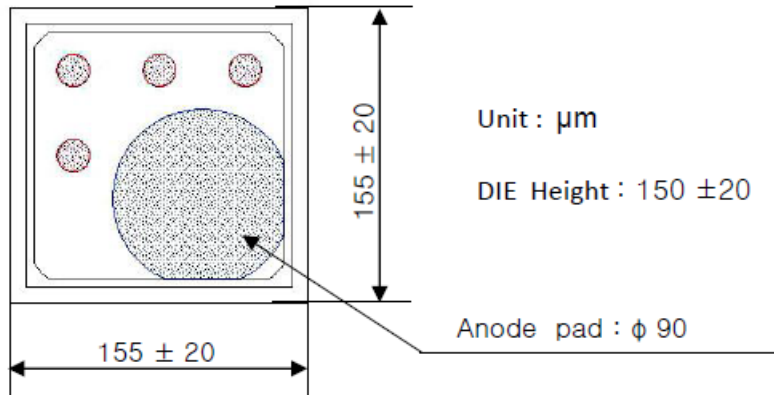
Absolute Maximum Ratings				
Parameters	Min.	Max.	Unit	Conditions
Storage Temperature	-40	85	°C	
Operating Temperature	-10	70	°C	
Continuous Forward Current		40	mA	
Continuous Reverse Voltage		5	V	10uA

Electro-Optical Characteristics (T _a =25°C unless otherwise stated)						
Parameters	Symbol	Min.	Typ.	Max.	Unit	Conditions
Threshold Current	I _{th}		10		mA	CW
Slope Efficiency	η	0.5	0.7		W/A	I _f =30mA
Optical Output Power	P _o		20		mW	I _f =30mA
Peak Wavelength	λ _P		945		nm	I _f =30mA
Beam Divergence	Θ		24		°	I _f =30mA (1/e ²)
Operating Voltage	V _f		1.9		V	I _f =30mA
Breakdown Voltage	V _b		-10		V	
Series Resistance	R _d		20		Ohm	I _f =30mA

Typical Characteristics



Outline Dimensions



Additional Notes

- The inherent design of this component causes it to be sensitive to electrostatic discharge (ESD). To prevent ESD-induced damage and/or degradation to equipment, take normal ESD precautions when handling this product.
- Specifications are subject to change without notice.