



## HYG Laser Safety Eyewear Lens Filter

### PROTECTION SPECIFICATIONS

#### CE Rating

Wavelength (nm)	L-Rating
1025-1075	DIRM LB5
1035-1070	DIRM LB6
1045-1065	D LB6 + IR LB7 + M LB7Y
1450-1650	DIR LB2
>1650-1775	DI LB3 + R LB3Y
>1775-3000	DI LB4 + R LB3Y
5200-11000	DI LB4 + R LB3Y

#### Optical Density

Wavelength (nm)	OD
1025-1075	5+
1035-1070	6+
1045-1065	7+
1450-1650	2+
>1650-1775	3+
>1775-3000	4+
1980-2550	5+
5200-11000	5+
9000-10600	6+



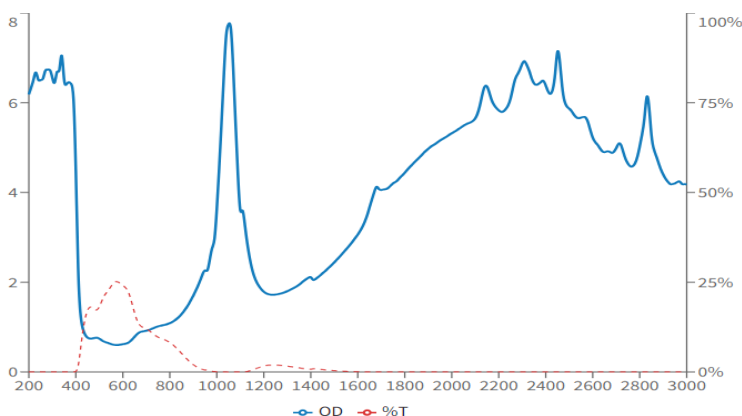
#### HYG FILTER SPECS

**Visible Light Transmission (VLT):**  
23%

**Lens Color:** Grey

**Material:** Polymer

### SPECTROPHOTOMETRY



#### Notes

- The specifications are subject to change without notice.
- Filter characteristic data points are nominally represented here solely for informational purposes. We guarantee only those specifications, including Optical Densities, CE ratings and VLT, that are imprinted on the eye protectors and listed on filter data sheets and web pages.