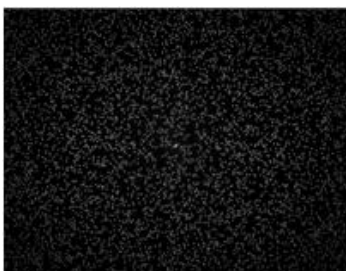




DOE-RD5K850-x

Diffractive Optical Element DOE 5000-Dot Random Pattern (50x38 deg at 850nm)



Features

- Random dots pattern
- Number of dots: 5,000
- Substrate material: PET/PMMA
- DOE active area: 4x4 mm
- Design wavelength: 850nm
- Minimum recommended beam diameter (FWHM): 2mm

DOE Specifications

Parameters	Value
Field of View (FOV)	50°x38° (HxV)
Aspect Ratio	4:3
Contrast ¹ (calculated by gray level)	≥25
Uniformity ² (calculated by gray level)	≥50%
Zero Order	≤0.3%
Substrate Material	PET, PMMA

Notes:

1. Contrast: In the defined area, the ratio of the 95th percentile of the grayscale value over the median grayscale value of the background, $C = I_{95\%} / I_{\text{median}}$
2. Uniformity: The ratio of the grayscale value of the area at a given location to the grayscale value of the area in the center of the pattern, $U = I_{\text{each area}} / I_{\text{max of each area}}$

Ordering Information

Part Number	Description
DOE-RD5K850-PET5	Diffractive Optical Element DOE 5000-Dot Random Pattern (50°x38° at 850nm) – PET - Dia. 5mm x T. 0.188mm
DOE-RD5K850-PMMA5	Diffractive Optical Element DOE 5000-Dot Random Pattern (50°x38° at 850nm) – PMMA - Dia. 5mm x T. 1mm

Note: Specifications are subject to change without notice.

Lasermate Group, Inc. – The Friend of Lasers

Tel: (909) 718-0999 | Fax: (909) 718-0998 | sales@lasermate.com | www.lasermate.com