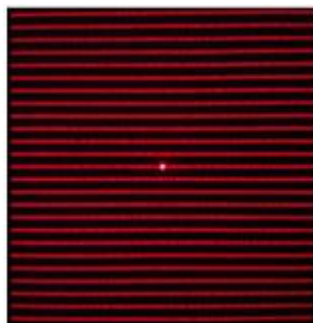




## DOE-LS25-x

## Diffractive Optical Element DOE 25 Lines (Square), 26 deg at 650nm



### Features

- 25 Parallel Lines (Square)
- Substrate material: PET/PMMA
- DOE active area: 5x5 mm
- Design wavelength: 650 nm
- Minimum recommended beam diameter (FWHM): 2mm

### DOE Specifications

| Parameters          | Value         |
|---------------------|---------------|
| Field of View (FOV) | 26°x26° (HxV) |
| Zero Order          | ≤ 1.5%        |
| Substrate Material  | PET, PMMA     |

## Notes:

1. Contrast: In the defined area, the ratio of the 95<sup>th</sup> percentile of the grayscale value over the median grayscale value of the background,  $C = I_{95\%} / I_{\text{median}}$
2. Uniformity: The ratio of the grayscale value of the area at a given location to the grayscale value of the area in the center of the pattern,  $U = I_{\text{each area}} / I_{\text{max of each area}}$

### Ordering Information

| Part Number    | Description   |
|----------------|---|
| DOE-LS25-PET5  | Diffractive Optical Element DOE 25 Lines (Square), 26°x26° at 650nm – PET - Dia. 5mm x T. 0.188mm |
| DOE-LS25-PMMA5 | Diffractive Optical Element DOE 25 Lines (Square), 26°x26° at 650nm – PMMA - Dia. 5mm x T. 1mm    |

Note: Specifications are subject to change without notice.

Lasermate Group, Inc. – The Friend of Lasers

Tel: (909) 718-0999 | Fax: (909) 718-0998 | [sales@lasermate.com](mailto:sales@lasermate.com) | [www.lasermate.com](http://www.lasermate.com)