



## **10GBASE-SR/SW Fiber Channel 10G 850nm MMF 300m SFP+ Optical Transceiver with Duplex LC Connector**

### **10GSRSPx**



#### **DESCRIPTION**

The 10GSRSPx Enhanced Small Form Factor Pluggable SFP+ optical transceivers are RoHS compliant and designed for use in serial optical data communications application specified for a data rate of 10 Gb/s. The SFP+ transceiver module provides up to 300m transmission distance over multi-mode fiber at nominal wavelength of 850nm. They are compliant with SFP+ MSA SFF-8431, SFF 8472 diagnostic monitoring interface, and EN60825-1.

#### **FEATURES**

- Compliant with SFP+ MSA SFF-8431
- Compliant with SFF8472 diagnostic monitoring interface
- Duplex LC connector
- Hot pluggable SFP+ package
- Class 1 laser product compliant with EN 60825-1
- Single power supply 3.3V
- Input/Output: AC/AC
- Transmit distance: 33m (OM1 fiber), 82m (OM2 fiber), 300m (OM3 fiber), 400m (OM4 fiber)

#### **APPLICATIONS**

- 10GBASE-SR/SW
- Fiber Channel 10G

#### **PRODUCT OVERVIEW**

<b>PART NUMBER</b>	<b>OPERATING TEMPERATURE</b>
10GSRSPFC	-10°C to 70°C
10GSRSPFM	-10°C to 85°C

**DIAGNOSTICS**

PARAMETER	RANGE	ACCURACY	UNIT	CALIBRATION
Internal Transceiver Temperature	-20 to 95	±3	°C	Internal
Internal Transceiver Voltage	3.1 to 3.5	±0.1	V	
Bias Current	0 to 20	±10%	mA	
TX Power	-10 to +1	±3	dB	
RX Average Power	-14 to 0	±3	dB	

**ABSOLUTE MAXIMUM RATINGS**

PARAMETER	SYMBOL	MIN	MAX	UNIT
Storage Temperature	T <sub>S</sub>	-40	85	°C
Supply Voltage	V <sub>CC</sub>	-0.5	4.0	V
Input Voltage	V <sub>IN</sub>	-0.5	V <sub>CC</sub>	V

**RECOMMENDED OPERATING CONDITIONS**

PARAMETER	SYMBOL	MIN	MAX	UNIT	NOTES
Case Operating Temperature	T <sub>C</sub>	-10	70	°C	10GSRSFPC
		-10	85		10GSRSFPM
Supply Voltage	V <sub>CC</sub>	3.14	3.46	V	
Supply Current	I <sub>TX</sub> + I <sub>RX</sub>		300	mA	
Power Consumption	P	-	1.0	W	

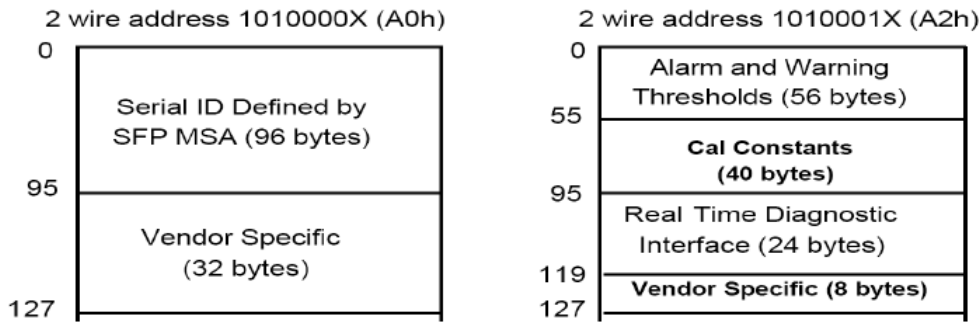
**TRANSMITTER ELECTRO-OPTICAL CHARACTERISTICS (V<sub>CC</sub> = 3.14V to 3.46V, T<sub>C</sub> = -10°C to 70°C, -10°C to 85°C)**

PARAMETER	SYMBOL	MIN	TYP.	MAX	UNIT
Data Rate	B		10.3125	10.7	Gbps
Output Optical Power (50/125um fiber, NA=0.20) (62.5/125um fiber, NA=0.275)	P <sub>out</sub>	-7.1	-	-1	dBm
Optical Modulation Amplitude	OMA	-4.3			dBm
Extinction Ratio	ER	3.5			dB
Center Wavelength	λ <sub>C</sub>	840	850	860	nm
Spectral Width (RMS)	Δλ	-	-	0.45	nm
Transmitter and Dispersion Penalty	TDP			3.9	dB
Relative Intensity Noise	RIN	-	-	-128	dB/Hz
Output Eye		Compliant with IEEE802.3ae			
Max. P <sub>out</sub> TX-DISABLE Asserted	P <sub>OFF</sub>	-	-	-35	dBm
Differential Input Impedance	Z <sub>d</sub>	80	100	120	Ω
Differential Input Voltage Swing	V <sub>DIFF</sub>	200		800	mV
Transmit Fault Output-Low	TX_FAULT <sub>L</sub>	0.0	-	0.5	V
Transmit Fault Output-High	TX_FAULT <sub>H</sub>	2.4	-	V <sub>CC</sub>	V
TX_DISABLE Assert Time	t <sub>off</sub>	-	-	100	μs
TX_DISABLE Negate Time	t <sub>on</sub>	-	-	2	ms
Time to Initialize, include reset of TX_FAULT	t <sub>init</sub>	-	-	300	ms
TX_FAULT from fault to assertion	t <sub>fault</sub>	-	-	1	ms
TX_DISABLE Time to start reset	t <sub>reset</sub>	10	-	-	μs

**RECEIVER ELECTRO-OPTICAL CHARACTERISTICS ( $V_{CC} = 3.14V$  to  $3.46V$ ,  $T_C = -10^{\circ}C$  to  $70^{\circ}C$ ,  $-10^{\circ}C$  to  $85^{\circ}C$ )**

PARAMETER	SYMBOL	MIN	TYP.	MAX	UNIT	NOTES
Data Rate	B		10.3125	10.7	Gbps	
Optical Input Power – maximum	$P_{IN}$	-1			dBm	BER<5x10 <sup>-12</sup>
Receiver Sensitivity	$P_{IN}$	-	-	-9.9	dBm	BER<5x10 <sup>-12</sup>
Receiver Sensitivity (OMA)	$P_{IN}$	-	-	-11.1	dBm	BER<5x10 <sup>-12</sup>
Stressed Receiver Sensitivity (OMA)	$P_{IN}$	-	-	-7.5	dBm	BER<5x10 <sup>-12</sup>
Operating Center Wavelength	$\lambda_C$	840	-	860	nm	
Optical Return Loss	ORL	12	-	-	dB	
Loss of Signal-Asserted	$P_A$	-30	-	-	dBm	
Loss of Signal-Deasserted	$P_D$	-	-	-12	dBm	
Differential Output Impedance	$Z_d$	80	100	120	$\Omega$	
Differential Output Voltage	$V_{DIFF}$	300	-	800	mV	
Receiver Loss of Signal Output Voltage-Low	RX_LOS <sub>L</sub>	0	-	0.5	V	
Receiver Loss of Signal Output-High	RX_LOS <sub>H</sub>	2.4	-	$V_{CC}$	V	
Receiver Loss of Signal Assert Time (off to on)	$t_{A,RX\_LOS}$	-	-	100	$\mu s$	
Receiver Loss of Signal Assert Time (on to off)	$t_{D,RX\_LOS}$	-	-	100	$\mu s$	

**DIGITAL DIAGNOSTIC MEMORY MAP**



**EEPROM Serial ID Memory Contents (A0h)**

Address	Hex	Fields	Result
0	03(H)	identifier	SFP or SFP+
1	04(H)	Ext.Identifier	GBIC/SFP function is defined by two-wire interface ID only
2	07(H)	Connector	LC
3	10(H)	Transceiver	10G Base-SR;
4	00(H)	Transceiver	Unallocated
5	00(H)		
6	00(H)		
7	20(H)	Transceiver	intermediate distance(I);
8	40(H)	Transceiver	Shortwave laser w/o OFC(SN);
9	0C(H)	Transceiver	Multimode;50um(M5;M5E);Multimode;62.5um(M6);
10	80(H)	Transceiver	1200MBytes/sec;
11	06(H)	Encoding	64B/66B
12	67(H)	BR(Nominal)	10300Mbps
13	00(H)	Rate Identifier	Unspecified
14	00(H)	Length(SMFm)-km	N/A
15	00(H)	Length(SMF)	N/A
16	08(H)	Length(50µm)	8(units of 10m)
17	03(H)	Length(62.5µm)	3(units of 10m)
18	00(H)	Length(cable)	N/A
19	1E(H)	Length(OM3)	30(units of 10m)
20	41(H)	Vendor name	A
21	50(H)	Vendor name	P
22	41(H)	Vendor name	A
23	43(H)	Vendor name	C
24	20(H)	Vendor name	
25	4F(H)	Vendor name	O
26	70(H)	Vendor name	p

27	74(H)	Vendor name	t
28	6F(H)	Vendor name	o
29	20(H)	Vendor name	
30	20(H)	Vendor name	
31	20(H)	Vendor name	
32	20(H)	Vendor name	
33	20(H)	Vendor name	
34	20(H)	Vendor name	
35	20(H)	Vendor name	
36	00(H)	Transceiver	Unallocated
37	00(H)	Vendor OUI	0
38	0F(H)	Vendor OUI	0F
39	99(H)	Vendor OUI	99
40	4C(H)	Vendor PN	L
41	45(H)	Vendor PN	E
42	32(H)	Vendor PN	2
43	38(H)	Vendor PN	8
44	2D(H)	Vendor PN	-
45	48(H)	Vendor PN	H
46	33(H)	Vendor PN	3
47	53(H)	Vendor PN	S
48	2D(H)	Vendor PN	-
49	54(H)	Vendor PN	T
50	43(H)	Vendor PN	C
51	2D(H)	Vendor PN	-
52	4E(H)	Vendor PN	N
53	20(H)	Vendor PN	
54	20(H)	Vendor PN	
55	20(H)	Vendor PN	
56	30(H)	Vendor rev	0
57	30(H)	Vendor rev	0
58	30(H)	Vendor rev	0
59	30(H)	Vendor rev	0
60	03(H)	Wavelength	850nm
61	52(H)	Wavelength	
62	00(H)	Unallocated	Unallocated
63		CC_BASE	
64	00(H)	Options	Unallocated
65	1A(H)	Options	Loss of Signal;Tx_Fault;Tx_Disable;
66	00(H)	BR	max
67	00(H)	BR	min
68		Vendor SN	
69			
70			

71			
72			
73			
74			
75			
76			
77			
78			
79			
80			
81			
82			
83			
84		<b>Date code</b>	
85			
86			
87			
88			
89			
90			
91			
92	68(H)	<b>Diagnostic Monitoring Type</b>	<b>Received Power Measurement Type;Internally Calibrated;Digital diagnostic monitoring implemented;</b>
93	B0(H)	<b>Enhanced Options</b>	<b>Rx_Loss Monitoring;Tx_Fault Monitoring;Alarm/warning Flags;</b>
94	03(H)	<b>SFF-8472 Compliance</b>	<b>includes functionality described in Rev 10.2 of SFF-8472</b>
95		<b>CC_EXT</b>	
96	45(H)	<b>Vendor Specific</b>	<b>E</b>
97	58(H)	<b>Vendor Specific</b>	<b>X</b>
98	54(H)	<b>Vendor Specific</b>	<b>T</b>
99	52(H)	<b>Vendor Specific</b>	<b>R</b>
100	45(H)	<b>Vendor Specific</b>	<b>E</b>
101	4D(H)	<b>Vendor Specific</b>	<b>M</b>
102	45(H)	<b>Vendor Specific</b>	<b>E</b>
103	4C(H)	<b>Vendor Specific</b>	<b>L</b>
104	59(H)	<b>Vendor Specific</b>	<b>Y</b>
105	20(H)	<b>Vendor Specific</b>	
106	43(H)	<b>Vendor Specific</b>	<b>C</b>
107	4F(H)	<b>Vendor Specific</b>	<b>O</b>
108	4D(H)	<b>Vendor Specific</b>	<b>M</b>
109	50(H)	<b>Vendor Specific</b>	<b>P</b>
110	41(H)	<b>Vendor Specific</b>	<b>A</b>

111	54(H)	Vendor Specific	T
112	49(H)	Vendor Specific	I
113	42(H)	Vendor Specific	B
114	4C(H)	Vendor Specific	L
115	45(H)	Vendor Specific	E
116	20(H)	Vendor Specific	
117	20(H)	Vendor Specific	
118	20(H)	Vendor Specific	
119	20(H)	Vendor Specific	
120	20(H)	Vendor Specific	
121	20(H)	Vendor Specific	
122	20(H)	Vendor Specific	
123	20(H)	Vendor Specific	
124	20(H)	Vendor Specific	
125	20(H)	Vendor Specific	
126	20(H)	Vendor Specific	
127	20(H)	Vendor Specific	

## EEPROM Serial ID Memory Contents (A2h)

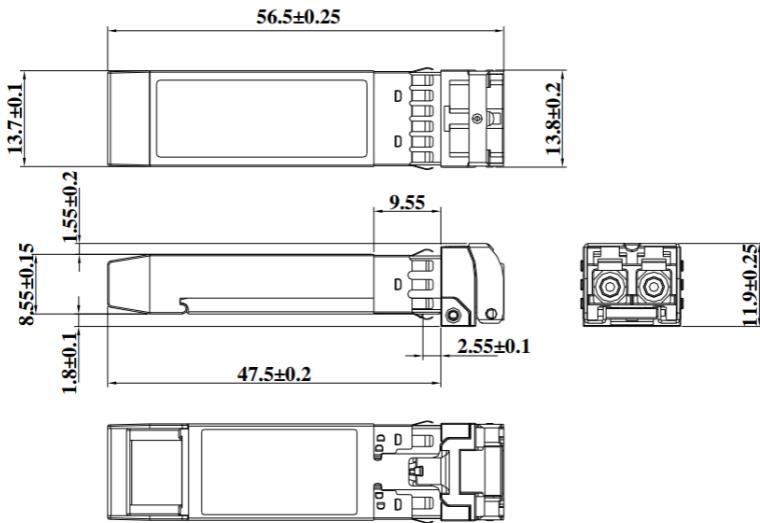
For  $T_c = -10^{\circ}\text{C}$  to  $70^{\circ}\text{C}$ 

Address(A2h)	Description	Value
00-01	Temp High Alarm	80 Degree C
02-03	Temp Low Alarm	-20 Degree C
04-05	Temp High Warning	75 Degree C
06-07	Temp Low Warning	-15 Degree C
08-09	Voltage High Alarm	3.6 V
10-11	Voltage Low Alarm	3.0 V
12-13	Voltage High Warning	3.5 V
14-15	Voltage Low Warning	3.1 V
16-17	Bias High Alarm	10 mA
18-19	Bias Low Alarm	0.1 mA
20-21	Bias High Warning	9 mA
22-23	Bias Low Warning	0.5 mA
24-25	TX Power High Alarm	0 dBm
26-27	TX Power Low Alarm	-8.1 dBm
28-29	TX Power High Warning	-1 dBm
30-31	TX Power Low Warning	-7.1 dBm
32-33	RX Power High Alarm	0 dBm
34-35	RX Power Low Alarm	-14 dBm
36-37	RX Power High Warning	-1 dBm
38-39	RX Power Low Warning	-12 dBm
40-55	Reserved Reserved for future monitored quantities	
56-91	External calibration constant	

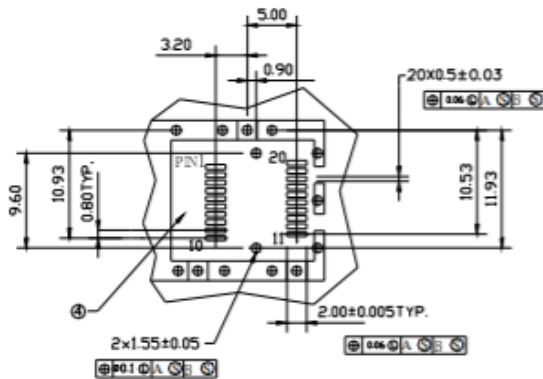
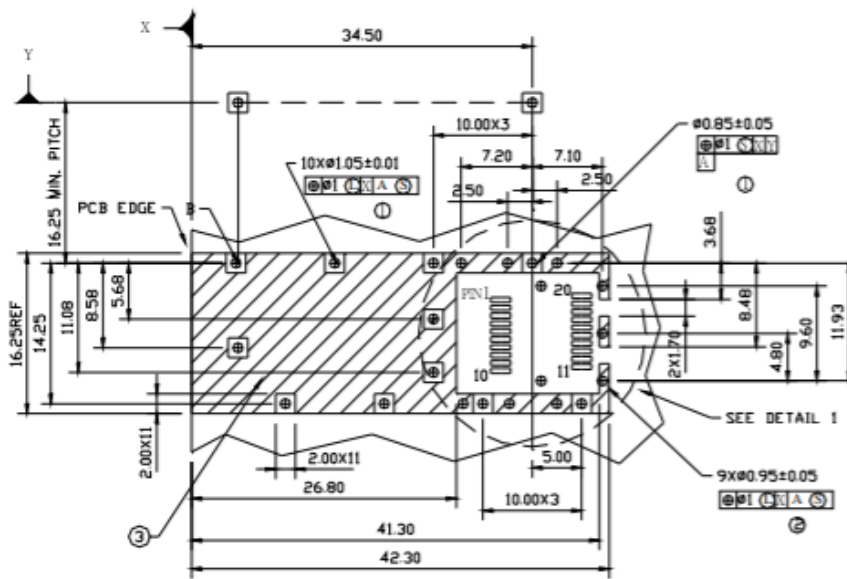
92-94	Reserved	
95	Check sum	
96-97	Real Time temperature	
98-99	Real Time supply voltage	
100-101	Real Time TX bias current	
102-103	Real Time TX optical power	
104-105	Real Time RX received power	
106-109	Reserved	
110(bit7)	NA	
110(bit6)	NA	
110(bit5)	Reserved	
110(bit4)	NA	
110(bit3)	NA	
110(bit2)	Digital state of TX fault output pin	
110(bit1)	Digital state of LOS output pin	
110(bit0)	NA	
111	Reserved	
112(bit7)	Set when internal temperature exceeds high alarm level	
112(bit6)	Set when internal temperature exceeds is below alarm level	
112(bit5)	Set when internal supply voltage exceeds high alarm level	
112(bit4)	Set when internal supply voltage is below alarm level	
112(bit3)	Set when TX bias exceeds high alarm level	
112(bit2)	Set when TX bias voltage is below alarm level	
112(bit1)	Set when TX output power exceeds high alarm level	
112(bit0)	Set when TX output power voltage is below alarm level	
113(bit7)	Set when RX received power exceeds high alarm level	
113(bit6)	Set when RX received power is below alarm level	
114-115	Reserved	
116(bit7)	Set when internal temperature exceeds high warning level	
116(bit6)	Set when internal temperature exceeds is below warning level	
116(bit5)	Set when internal supply voltage exceeds high warning level	
116(bit4)	Set when internal supply voltage is below warning level	
116(bit3)	Set when TX bias exceeds high warning level	
116(bit2)	Set when TX bias voltage is below warning level	
116(bit1)	Set when TX output power exceeds high warning level	
116(bit0)	Set when TX output power voltage is below warning level	
117(bit7)	Set when RX received power exceeds high warning level	
117(bit6)	Set when RX received power is below warning level	
117(bit5-0)	Reserved	
118-119	Reserved	
120-127	Reserved	



**DIMENSIONS (unit: mm)**



**SFP HOST BOARD MECHANICAL LAYOUT (unit: mm)**

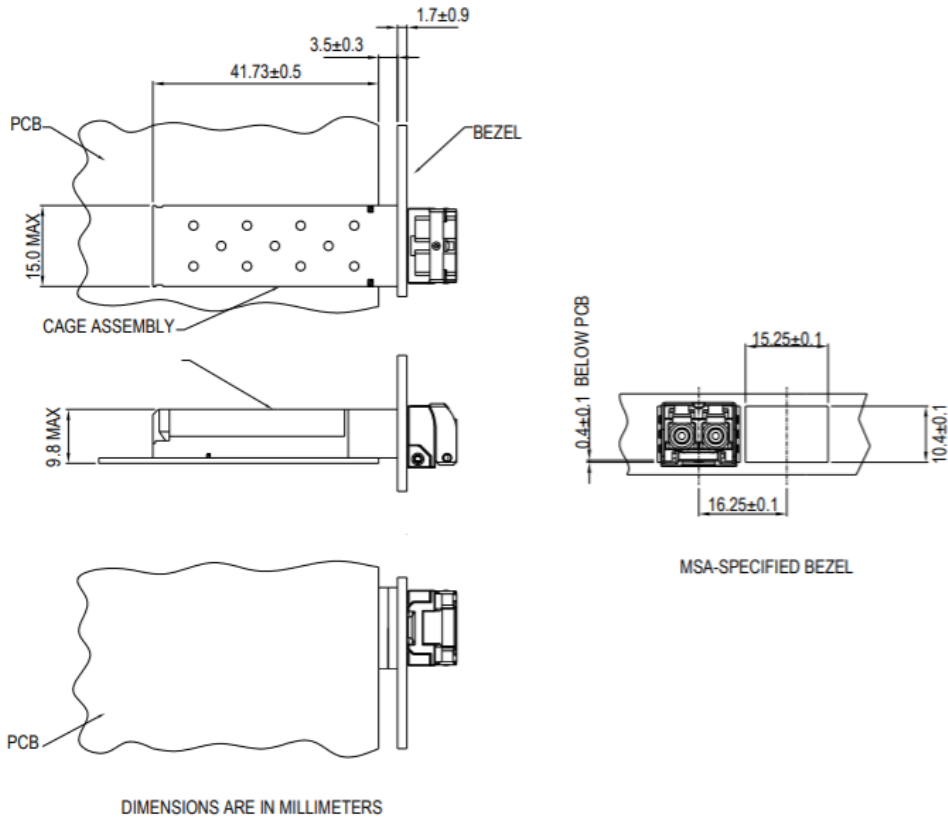


**LEGEND**

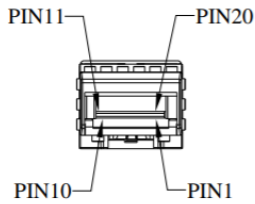
- 1. PADS AND VIAS ARE CHASSIS GROUND
- 2. THROUGH HOLES, PLATING OPTIONAL
- 3. HATCHED AREA DENOTES COMPONENT AND TRACE KEEPOUT (EXCEPT CHASSIS GROUND)
- 4. AREA DENOTES COMPONENT KEEPOUT (TRACES ALLOWED)

DIMENSIONS ARE IN MILLIMETERS

**ASSEMBLY DRAWING**



**PIN ASSIGNMENT**



PIN	SIGNAL NAME	DESCRIPTION	PIN	SIGNAL NAME	DESCRIPTION
1	T <sub>GND</sub>	Transmit Ground	11	R <sub>GND</sub>	Receiver Ground
2	TX_FAULT	Transmit Fault	12	RX-	Receive Data out Bar, ac coupled
3	TX_DISABLE	Transmit Disable	13	RX+	Receive Data out, ac coupled
4	MOD_DEF (2)	SDA Serial Data Signal	14	R <sub>GND</sub>	Receiver Ground
5	MOD_DEF (1)	SCL Serial Clock Signal	15	V <sub>CCR</sub>	Receiver Power Supply
6	MOD_DEF (0)	TTL Low	16	V <sub>CCT</sub>	Transmitter Power Supply
7	RS0	RX Rate Select, No used	17	T <sub>GND</sub>	Transmitter Ground
8	RX_LOS	Receiver Loss of Signal, TTL High, open collector	18	TX+	Transmit Data in, ac coupled
9	RS1	TX Rate Select, No used	19	TX-	Transmit Data in Bar, ac coupled
10	R <sub>GND</sub>	Receiver Ground	20	T <sub>GND</sub>	Transmitter Ground

**ADDITIONAL NOTES**

- Avoid eye or skin exposure to laser radiations.
- The device is sensitive to electro-static discharge (ESD). The device should be handled with ESD proof tools. To assemble the device on PCB, proper grounding is required to prevent ESD.
- Specifications are subject to change without notice.



**Lasermate Group, Inc.**  
19608 Camino De Rosa  
Walnut, CA 91789 USA  
Tel: (909)718-0999  
Fax: (909)718-0998  
[sales@lasermate.com](mailto:sales@lasermate.com)  
[www.lasermate.com](http://www.lasermate.com)