



## 850nm 2000mW CW VCSEL Diode with Diffuser, 3535 SMD Package

**VCD35A-850C2Wx**

### Description

The Lasermate VCD35A-850C2Wx is an 850nm wavelength, 2000mW output power, CW operating mode, Vertical Cavity Surface Emitting Laser (VCSEL) diode with diffuser in surface mount (SMD) package designed for use in sensing applications.

### Features

- Surface mount 3535 SMD package with Diffuser
- Single longitudinal mode
- Good thermal conduction
- Short rise time
- Oxide isolation technology
- High reliability
- Easy to collimate
- 2W 850nm VCSEL @ 2A

### Applications

- 3D sensors
- Proximity sensor
- Lidar
- IR illumination
- Medical application

### Product Overview

The following table lists the available part numbers, as well as the package type and diffuser beam angle of each of the part numbers.

Part Number	Package	Diffuser Beam Angle
VCD35A-850C2WA	3535 Package, Substrate AlN	60°x45°
VCD35A-850C2WB	3535 Package, Substrate AlN	72°x58°
VCD35A-850C2WC	3535 Package, Substrate AlN	90°x70°
VCD35A-850C2WD	3535 Package, Substrate AlN	110°x85°
VCD35A-850C2WE	3535 Package, Substrate AlN	120°x90°

## Specifications

Absolute Maximum Ratings				
Parameters	Symbol	Rating	Unit	Conditions
Case Operating Temperature	Top	-40 to 85	°C	
Storage Temperature	Tstg	-40 to 105	°C	
Reflow Soldering Temperature	Tsol	260	°C	10 seconds
Reverse Voltage	Vr	5	V	
Maximum Continuous Current	I <sub>max</sub>	3	A	
ESD Exposure (Human Body) Model	ESD	2K	V	

### Notes:

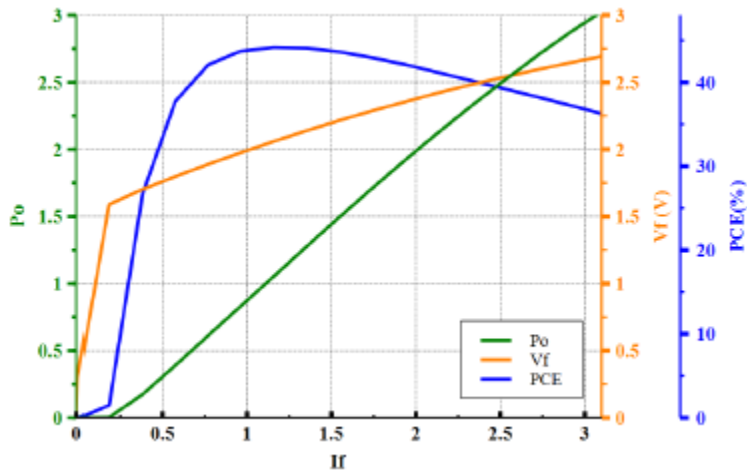
- Stresses greater than those listed under “Absolute Maximum Ratings” may cause permanent damage to the device. This is a stress rating only and functional operation of the device at these or other conditions above those indicated in the operations section for expanded periods of time may affect reliability.
- In its maximum rating diode laser operation could damage its performance or cause potential safety hazard such as equipment failure.
- Electrostatic discharge is the main reason for laser fault of the diode. Take effective precautions against ESD. When dealing with laser diodes, use wrist strap, grounding work surface and strict antistatic technology.

Electro-Optical Characteristics (T <sub>op</sub> =25°C, CW mode)						
Parameters	Symbol	Min.	Typ.	Max.	Unit	Conditions
Optical Output Power	P <sub>o</sub>	-	2.0	-	W	I <sub>F</sub> =2A
Threshold Current	I <sub>th</sub>	-	0.25	-	A	
Forward Current		-	2.0	-	A	
Peak Wavelength	λ <sub>p</sub>	840	850	860	nm	I <sub>F</sub> =2A
Forward Voltage	V <sub>F</sub>	-	2.4	-	V	I <sub>F</sub> =2A
Power Conversion Efficiency	PCE	-	41	-	%	I <sub>F</sub> =2A
Slope Efficiency	η	-	1.04	-	W/A	P <sub>o</sub> =2W
Series Resistance	R <sub>s</sub>	-	0.33	-	Ω	I <sub>F</sub> =2A
Wavelength Temperature Drift	Δλ <sub>p</sub> / ΔT	-	0.07	-	nm/°C	I <sub>F</sub> =2A
Number of Emission Aperture			306			

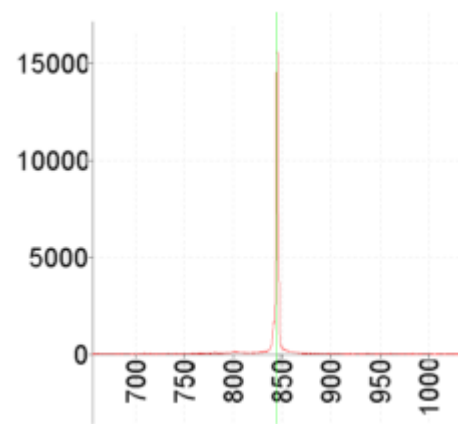
Note: Electro-optical characteristic with a package or diffuser would require further evaluation. Values are based on limited sample size and estimated values.

Typical Characteristics

LIV Graph

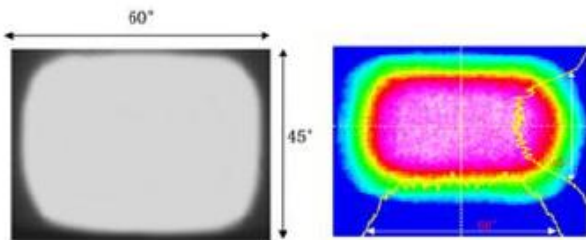


Intensity vs. Wavelength

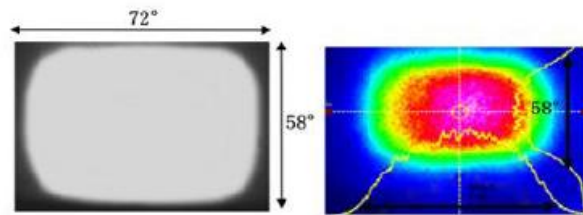


Typical Beam Profile with Diffuser

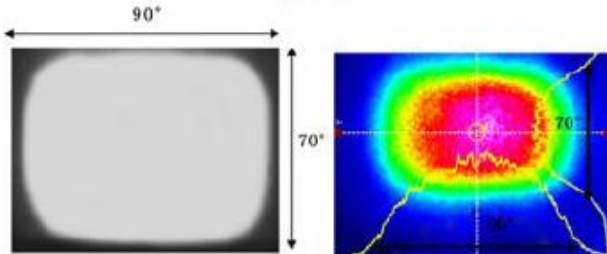
Beam angle: 60°x45°



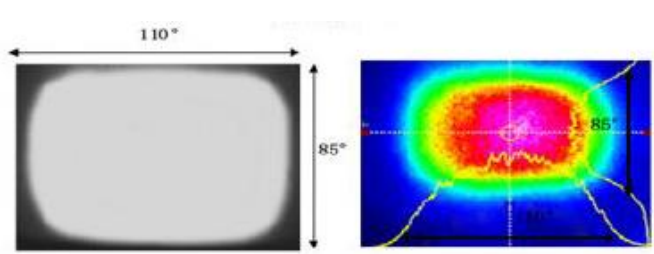
Beam angle: 72°x58°



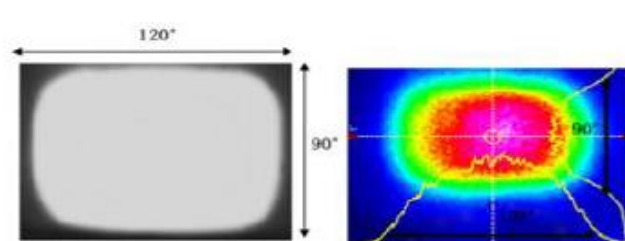
Beam angle: 90°x70°



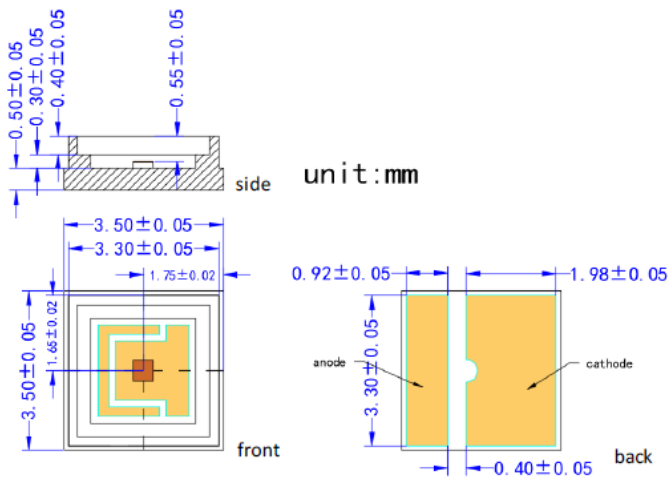
Beam angle: 110°x85°



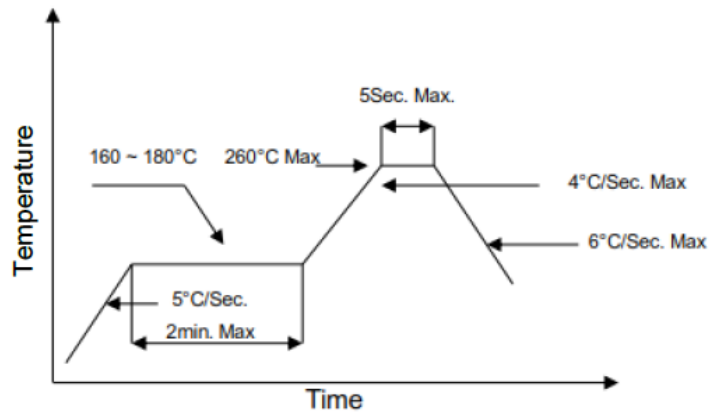
Beam angle: 120°x90°



## Outline Dimensions (unit: mm)



## SMT Reflow Soldering Curve



Note: Reflow soldering can be operated only one time. During the temperature ramp-up, no forces may be exerted on the LD which would deform or damage them. After soldering is completed, please do not process until the product temperature ramps down to room temperature.

## Additional Notes

1. Please use solder paste to cure the laser diode.
2. Please make sure that the heat of VCSEL diode has been completely conducted to metal shell to avoid affecting the optical power output.
3. This VCSEL diode can be only used in constant voltage and current.
4. Please do not aim the laser at people or animals.
5. You may observe the laser spot through an image monitoring equipment.
6. Please do not touch VCSEL diode surface by naked hands or squeeze the sealant on VCSEL diode surface. It may cause wrong optical angle and distorted laser spot, and even damage the VCSEL diode.
7. Please use ceramic suction nozzle to absorb the VCSEL diode, so as to avoid VCSEL diode sticking to the nozzle.
8. Please add a 0.02s blowing action after locating the laser diode to aluminum substrate.
9. Specifications are subject to change without notice.



**Lasermate Group, Inc.**  
19608 Camino De Rosa  
Walnut, CA 91789 USA  
Tel: (909)718-0999  
Fax: (909)718-0998  
[sales@lasermate.com](mailto:sales@lasermate.com)  
[www.lasermate.com](http://www.lasermate.com)